

Installation

Provided with the TM are 2 prewired connectors. Timers damaged by incorrect connections are not covered by the warranty. Determine the polarity of the connectors before connecting. Refer to fig. 1 for pin # and the label on the back of the timer to match.

Connector Wiring

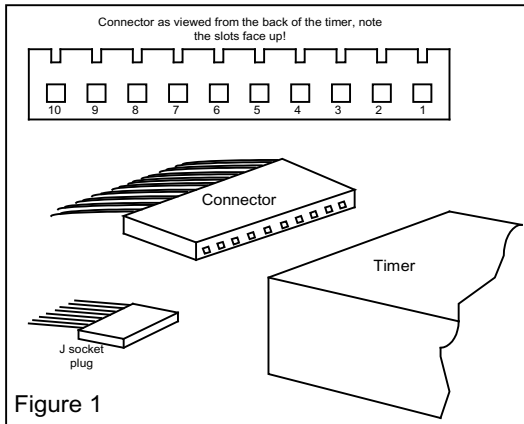


Figure 1

J Socket Plug

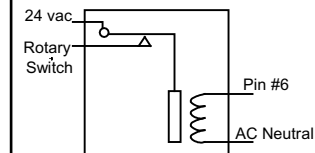
Wire Color	Pin #	Application
purple	1	24v pulse to mech coin counter
org/black	2	coin pulse from acceptor
grn/black	3	last minute horn (24 v DC ground)
red/black	4	last minute horn (24 v DC hot)
light grn	5	safety ground
blue/blk	6	timed output
yellow	7	jumpered (do not use)
yellow	8	jumpered (do not use)
green	9	TM-5J power (24 volts AC neutral)
orange	10	TM-5J power (24 volts AC hot)

The TM-5J requires additional electrical installation for the change over time feature to function, using the J socket plug (fig. 1)

The J features are wired through this add'l plug. The wires numbered 1-8, right to left. The red wire on the harness is wire #1. Connect the red, org, yellow, and green wires to the appropriate rotary switch terminals for the products you wish to activate the changeover time. Note that each selection connected to changeover time is individually programmable (see programming section). The remain 4 wires are not used and should be secured with tape or wire ties.

Relay Wiring

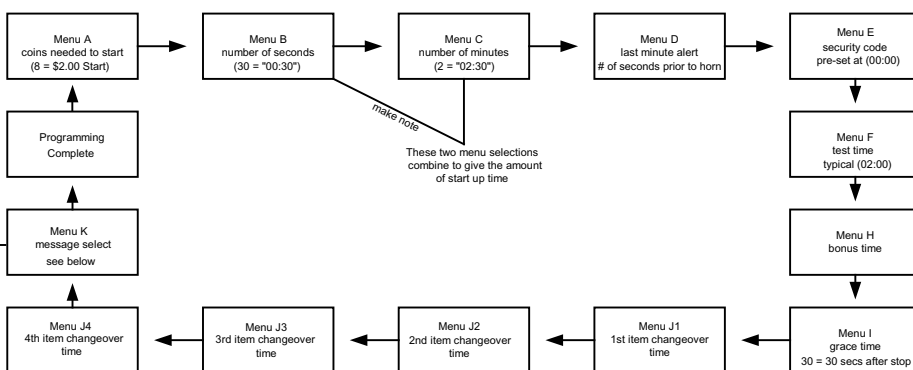
It is recommended that pin 6, the timed output, be wired to an "isolation relay" in order to provide short circuit protection.



Pin 6 is used to close the relay so that the 24 vac power does not have to flow through pin 6 (the timer).

Programming

The mode and set switches are labeled on the back of the timer for easy identification. "Mode" causes the menu to advance, "Set" causes the # displayed to increase by one unit. There is no battery, the timer will retain its memory even w/o power.



The default code is 0000. To set the code depress and release the set button until the desired number is shown, then press mode. Note: the code will appear in a clock format (ie. 12:34).

This function is for the remote control. Typically 4-5 minutes is sufficient time to test the equipment and wash the bay.

This feature gives the customer more value for coins deposited after the initial start price. The amount of time programmed will be the amount given per quarter after the initial start up.

Grace time is defined as the period after the purchased time has expired. Customers can re-start the equipment for 1 coin within the grace period (usually 30 seconds).

Menu K sets the greeting message for: wash, vac, run, use, dry, or play. Once selected it will flash the price, "TO WASH" and "PRICE TO START". Press the mode button when finished.

If you have connected the "J" plug harness the 4 products that have been wired will each be controlled by the corresponding J menu. J1 for the first product and so on. To set the amount depress and release the set button until the correct # of seconds show, the press the mode button.

ReProgramming - Simply follow the initial programming instructions. The existing values will be displayed allowing changes to be made rapidly. For example, assume the timer is programmed at \$1.25 for 4 minutes and you wish to raise your price to \$1.50 for 4 minutes. Follow the programming instructions, when the display reads "A :05" depress and release the set button once. The display will now read "A :06" indicating 6 coins are needed to start. Now press and release the mode button 15 times. Bonus time, if programmed, calculates automatically for the change in price. All other features would remain unchanged. To cancel all programming you may perform a "power-on restart". This clears the memory to the factory programmed default. To do this, unplug the the main connector, press and hold the mode button while reinstalling the plug. The timer is now at its default program, and the display will read "MENU".

Further instruction and trouble shooting methods are available on the technical pages of our website: www.hpws.com or by calling 303.322.2232.

For service and repair send to:
HPWS, 3901 East 41st Avenue, Denver CO, 80216

HPWS